

Please include the title of this work on Performing Right Society's returns, whenever it is publicly performed

From the M-G-M Picture "FLAME AND THE FLESH"

273 NO ONE BUT YOU

(WALTZ)

Words by JACK LAWRENCE

Music by NICHOLAS BRODSZKY

Arr. by Johnny Douglas

1st Sax (Eb Alto)

Slow Waltz

SOLI

mf

A

Tutti

SOLI

B

Tutti

SOLI

1

2

C

7

SOLI

D

Tutti

mf

rall.

Please include the title of this work, on Performing Right Society's returns, whenever it is publicly performed
From the M-G-M Picture "FLAME AND THE FLESH"

273

NO ONE BUT YOU

(WALTZ)

Words by JACK LAWRENCE
Music by NICHOLAS BRODSZKY
Arr. by Johnny Douglas

3rd Sax (Eb Alto)

Slow Waltz

mf SOLI

A

Tutti SOLI

B *Tutti*

SOLI 1 2 *SOLI*

C *f* 7

SOLI 3 3

Tutti *mf* *f* *rall.*

Please include the title of this work, on Performing Right Society's returns, whenever it is publicly performed

From the M-G-M Picture "FLAME AND THE FLESH"

273 NO ONE BUT YOU

(WALTZ)

Words by JACK LAWRENCE

Music by NICHOLAS BRODSZKY

Arr. by Johnny Douglas

2nd Sax (B \flat Tenor)

Slow Waltz

SOLI

mf

A

Tutti

SOLI

B

Tutti

SOLI

1

2

C

SOLO

SOLI

D

Tutti

Under the title of this work on Performing Right Society's returns, whenever it is publicly performed

From the M-G-M Picture "FLAME AND THE FLESH"

NO ONE BUT YOU

(WALTZ)

Words by JACK LAWRENCE
Music by NICHOLAS BRODSZKY
Arr. by Johnny Douglas

4th Sax (Bb Tenor)

273

Slow Waltz

SOLI

Musical staff for 4th Sax (Bb Tenor). The staff is in G major (one sharp) and 3/4 time. It begins with a *mf* dynamic marking. The melody consists of eighth and quarter notes, with a fermata over the final measure.

A

Piano accompaniment for section A. It features a flowing eighth-note accompaniment in the left hand and a melodic line in the right hand. The dynamics range from *mf* to *f*.

Tutti

SOLI

Piano accompaniment for section B. The left hand continues with eighth-note patterns, while the right hand has a more active melodic line. Dynamics include *f* and *mf*.

B

Piano accompaniment for section C. This section includes a first ending (marked '1') and a second ending (marked '2'). The dynamics are *f* and *mf*.

SOLI

1

2

SOLI

C

Musical staff for section C. It features a melodic line with a fermata over the final measure. Dynamics include *f* and *mf*.

D

Musical staff for section D. It begins with a *f* dynamic and includes a triplet of eighth notes. The staff concludes with a fermata.

Tutti

Piano accompaniment for section D. The left hand has a steady eighth-note accompaniment, and the right hand has a melodic line. Dynamics include *f* and *rall.*

mf

Please include the title of this work, on Performing Right Society's returns, whenever it is publicly performed

From the M-G-M Picture "FLAME AND THE FLESH"

73 NO ONE BUT YOU

(WALTZ)

Words by JACK LAWRENCE
Music by NICHOLAS BRODSZKY

Arr. by Johnny Douglas

5th Sax (E \flat Baritone)

Slow Waltz

SOLI

mf

A

Tutti

SOLI

B

Tutti

SOLI

1

2

C

7

D

SOLI

Tutti

mf

rall.

Please include the title of this work, on Performing Right Society's returns, whenever it is publicly performed

From the M-G-M Picture "FLAME AND THE FLESH"

73 NO ONE BUT YOU

(WALTZ)

Words by JACK LAWRENCE
Music by NICHOLAS BRODSZKY
Arr. by Johnny Douglas

1st Trumpet in B \flat

Slow Waltz



Tutti



Please include the title of this work, on Performing Right Society's returns, whenever it is publicly performed

From the M-G-M Picture "FLAME AND THE FLESH"

NO ONE BUT YOU

(WALTZ)

Words by JACK LAWRENCE
Music by NICHOLAS BRODSZKY

Arr. by Johnny Douglas

2nd Trumpet in B \flat

Slow Waltz

mf

A

CUP MUTE

OPEN

B

CUP MUTE

OPEN

C

CUP MUTE

Please include the title of this work, on Performing Right Society's returns, whenever it is publicly performed

From the M-G-M Picture "FLAME AND THE FLESH"

273

NO ONE BUT YOU

(WALTZ)

Words by JACK LAWRENCE
Music by NICHOLAS BRODSZKY

Arr. by Johnny Douglas

3rd Trumpet in B \flat

Slow Waltz



Please include the title of this work, on Performing Right Society's returns, whenever it is publicly performed

From the M-G-M Picture "FLAME AND THE FLESH"

NO ONE BUT YOU

(WALTZ)

Words by JACK LAWRENCE
Music by NICHOLAS BRODSZKY
Arr. by Johnny Douglas

1st Trombone

Slow Waltz

mf

A CUP MUTE

OPEN

mp

mf

B CUP MUTE

OPEN

mp

mf

C CUP MUTE

D 2

OPEN

Quasi Horn

Tutti

mf *mf*

rall.

From the M-G-M Picture "FLAME AND THE FLESH"

NO ONE BUT YOU

29

(WALTZ)

Words by JACK LAWRENCE
Music by NICHOLAS BRODSZKY
Arr. by Johnny Douglas

2nd Trombone

Slow Waltz

mf

A CUP MUTE OPEN

mf

B CUP MUTE OPEN

C CUP MUTE

D OPEN Quasi Horn Tutti

mf *mf*

f *rall.*

From the M-G-M Picture "FLAME AND THE FLESH"

NO ONE BUT YOU

(WALTZ)

Words by JACK LAWRENCE
Music by NICHOLAS BRODSZKY
Arr. by Johnny Douglas

Guitar

Slow Waltz

Ab6 Ab+7 Bbm7 Eb13

A

Ab Ab6 Ab7# Ab6 Ab Ab6 Ab7# Gb7 F7 (b5) F7

F+7 (b5) F7 Bbm Gb Bbm7 Eb7 Cm7 Ab6 Cm7 Fm7 Bb13 Bb9

B

Bbm7 Eb7 Bbm7 Ab Ab6 Ab7# Ab6 Ab Ab6

Ab7# Gb7 F7 (b5) F7 F+7 (b5) F7 Bbm Gb Bbm7 Eb7 Cm7 G6 Ab6 Ebm6 F7

Bbm7 Eb13 (b9) 1 Ab6 Bbm7 Eb7 Bbm7 2 Ab6 F7 Cm7

C

Bb Bb6 Bb7# Bb6 Bb7# Ab6 G7

G+7 G7 Cm Ab Cm F7 Dm Bb Dm Gm Gm7

D

Gm7 C13 C9 Cm7 F7 Cm7 Bb Bb6 Bb7# Bb6

Bb6 Bb7# Ab6 G7 G+7 G7 Cm Ab Cm Gb7 F7

Bb7# Ab6 Bb6 Fm6 G7(b9) Cm7 Gb9(b5) F13 Bb6 Cm7 F13(b9) Bb6

rall.

Please include the title of this work, on Performing Right Society's returns, whenever it is publicly performed

From the M-G-M Picture "FLAME AND THE FLESH"

273

NO ONE BUT YOU

(WALTZ)

Words by JACK LAWRENCE
Music by NICHOLAS BRODSZKY
Arr. by Johnny Douglas

Piano Conductor
& Piano Accordion Guide

Slow Waltz

No one but

Ab6 Ab+7 Bbm7 Eb13

A

you could take my heart be-fore you came, No one but you could make my

Ab Ab6 Ab7#4 Ab6 Ab Ab6

heart burst in-to flame; Now I hear my-self con-

Ab7#4 Gb7 F7 (b5) F7 F+7 (b5) F7 Bbm Gb Bbm7

-fess - ing All the dreams I've been sup - press - ing, All at once my lips are

Bbm7 Eb7 Cm7 Ab6 Cm7 Cm Fm7

Copyright 1953, by Loew's Incorporated, New York
Copyright 1954, by Loew's Incorporated, New York
Rights throughout the world controlled by Leo Feist, Inc. New York
Robbins Music Corporation, Ltd. 23, Denmark St. London. W.C. 2.

R. M. C. Ltd. 1133

Piano Conductor

2

B

bles-sing your name.

Your hands are cool, your eyes are warm, your smile is

Chords: Bb13 Bb9 Bbm7 Eb7 Bbm7 Ab Ab6

bliss,

I'd be a fool to fear the storm that's in your kiss.

Chords: Ab7b Ab6 Ab Ab6 Ab7b Gb7 F7 (b5) F7

Let your kiss de-stroy or save me, So shall it

Chords: F#7 (b5) F7 Bbm Gb Bbm7 Eb7 Cm7 G6 Ab6

bel Till life is through No one but you for me. 1

Chords: Ebm6 F7 Bbm7 Eb13 Ab6 Bbm7 Eb7 Bbm7

C

Chords: Ab6 F7 Cm7 Bb Bb6 Bb7b

Piano Conductor

Bb7^b Bb6 Bb7^b Ab6 G7 G+ G7

Fill in *ad lib* (Tenor Solo)

Cm Ab Cm F7 Dm Bb Dm Gm Gm7 C13 C9

Cm7 F7 Cm7 Bb Bb6 Bb7^b Bb6

Bb6 Bb7^b Ab6 G7 G+7 G7 Cm Ab Cm Gb7 F7

Bb7^b A#6 Bb6 Fm6 G7(b9) Cm7 Gb9(b5) F13 Bb6 Cm7 F13(b9) Bb6

Please include the title of this work, on Performing Right Society's returns, whenever it is publicly performed

From the M-G-M Picture "FLAME AND THE FLESH"

NO ONE BUT YOU

273

(WALTZ)

Words by JACK LAWRENCE
Music by NICHOLAS BRODSZKY
Arr. by Johnny Douglas

Bass 273

Slow Waltz

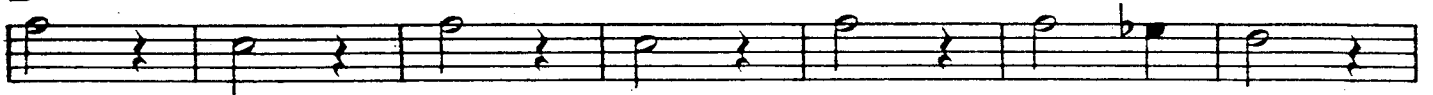
pizz



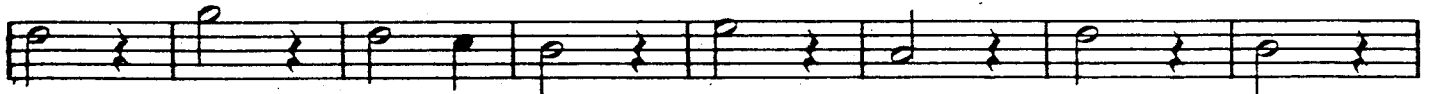
A



B



C



D



Please include the title of this work on Performing Right Society's returns, whenever it is publicly performed

From the M-G-M Picture "FLAME AND THE FLESH"

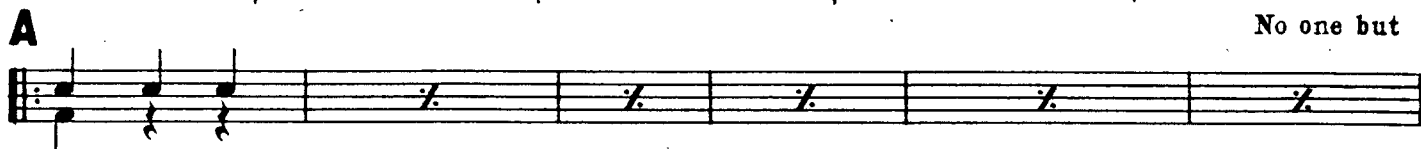
NO ONE BUT YOU 273

(WALTZ)

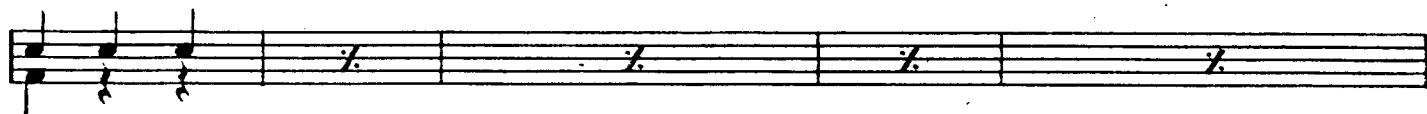
Words by JACK LAWRENCE
Music by NICHOLAS BRODSZKY
Arr. by Johnny Douglas

Drums

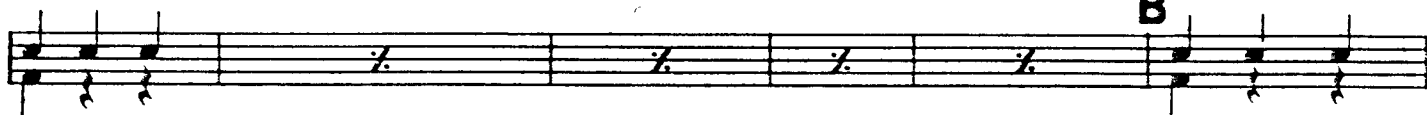
Slow Waltz



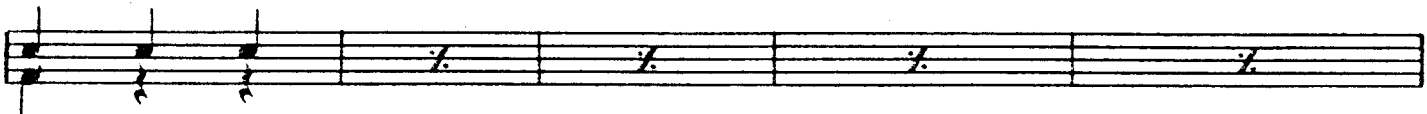
you could take my heart before you came, No one but you could make my heart burst into



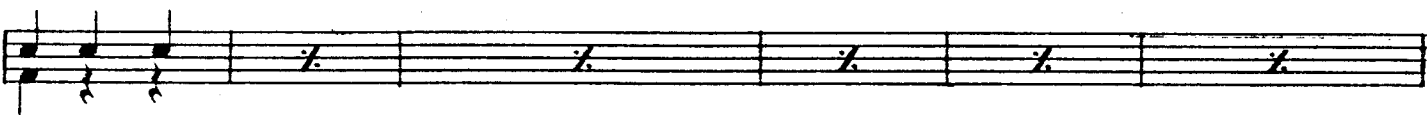
flame; Now I hear my-self con-fess-ing All the dreams I've been sup-



-press-ing, All at once my lips are blessing your name. Your hands are cool, your eyes are



warm, your smile is bliss, I'd be a fool to fear the storm that's in your



kiss. Let your kiss destroy or save me, So shall it be! Till life is



through No one but you for me.

